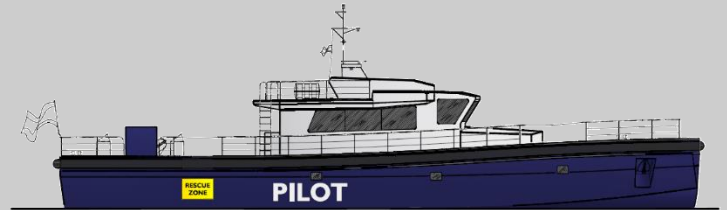


MAIN PARTICULARS

- Length overall:	29.10m
- Length between perpendiculars:	28.60m
- Beam:	7.25m
- Height:	8.10m
- Design draught:	1.50m
- Scantling draught:	1.80m
- Displacement:	105200kg
- Max. power:	2x 746kW
- Max. speed:	23kn
- Cruise speed:	13kn @ 80% MCR
- Pilots:	8pax
- Crew:	4pax
- Fuel:	20400L
- Fresh water:	7500L



C2 | 089 – PILOT BOAT 28m

The PILOT BOAT 28m is an offshore unit able to transport 8x pilots in individual and fully equipped cabins and 4x crew members with high comfort onboard.

The vessel is designed and fabricated in aluminum. Its design allows a safety pilot works which ensures a safety transfer through the transfer pilot area.

The main deck has large areas without obstacles and all contour is fully protected through a D-shape fender.

The superstructure is located in the middle of the ship and offering common areas for the pilots and crew. All cabins and other rooms, such as kitchen and living area are located under the main deck.

Pilots' cabins are symmetrical distributed along center line. These cabins are fully equipped with bunk beds and individual bathrooms.

The crew cabin is located forward and has its independent restroom with all services.

The engine room is located aft behind the accommodation cabins with a direct access from the corridor. Aft cabins are separated to the engine room by the fuel tanks with are used as noise mitigation coming from the engine room.

The engine room is equipped with the two main engines which deliver around 2000hp and other two auxiliary gensets though which all electrical situations are covered onboard.

The vessel has been side by side with the Shipyard in order to meet all the requirements indicated by the

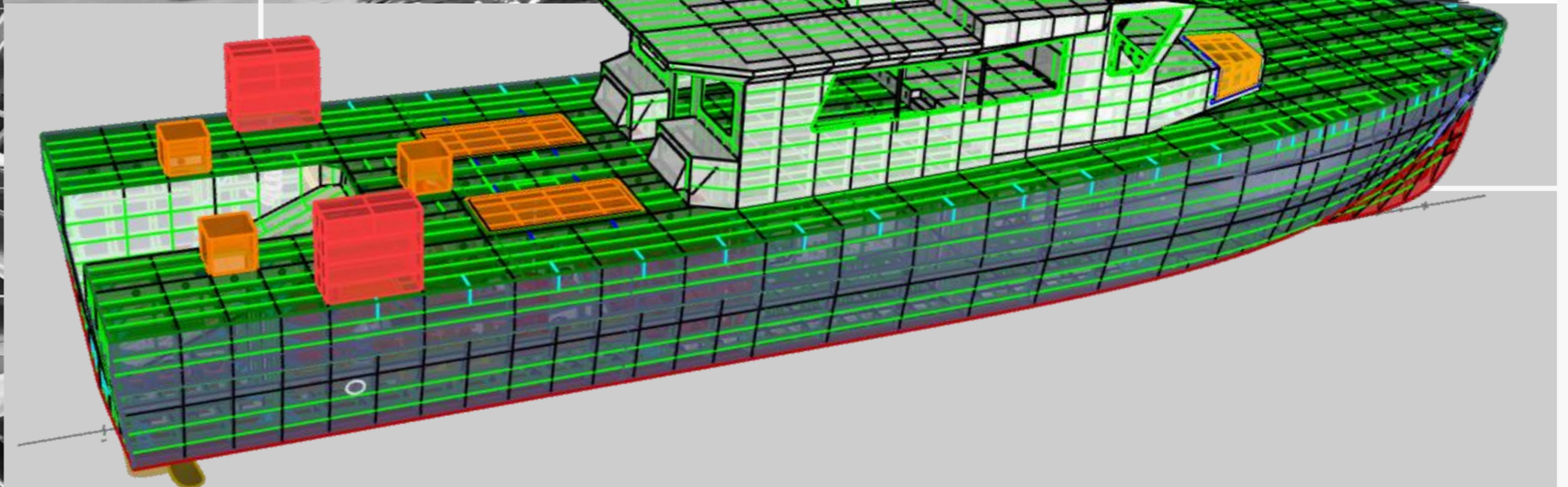
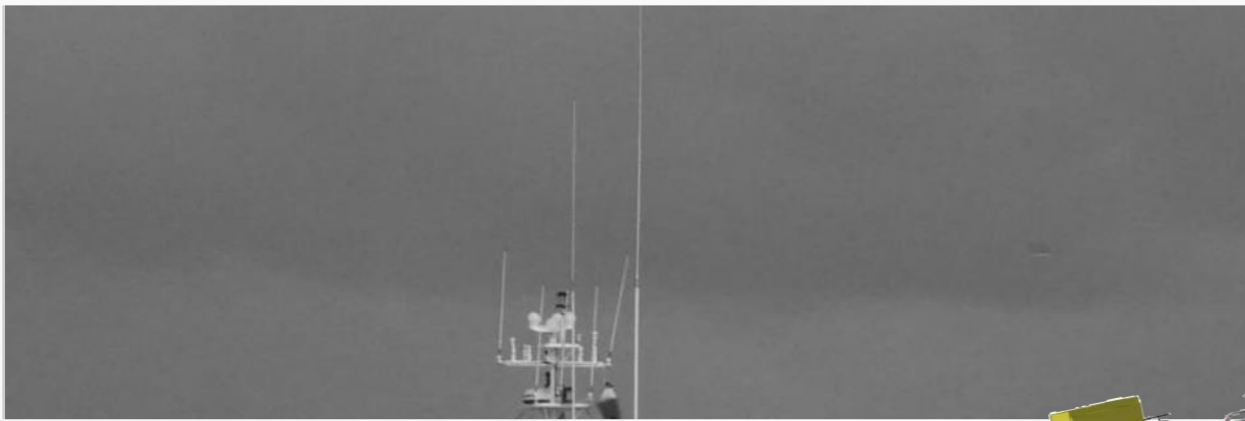
Shipowner.

In the aft deck, there are arranged both engine room hatches for the installation and maintenance works on the engines and a ramp centered in center line for the deployment of auxiliary rib equipped with an outboard engine.

The forward part of the main deck is dedicated for anchoring purposes and equipped with large spaces for stowage.

Furthermore, the vessel is equipped with an embarkment ramp installed in the bow to be used during beaching works.

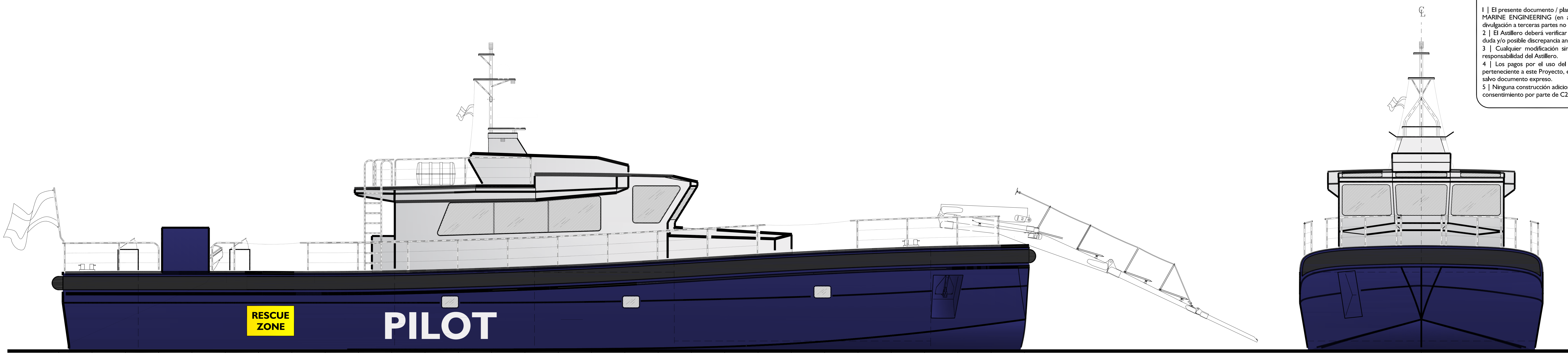
The vessel has been fabricated in South America and is in service in the Patagonia chilena since 2024.



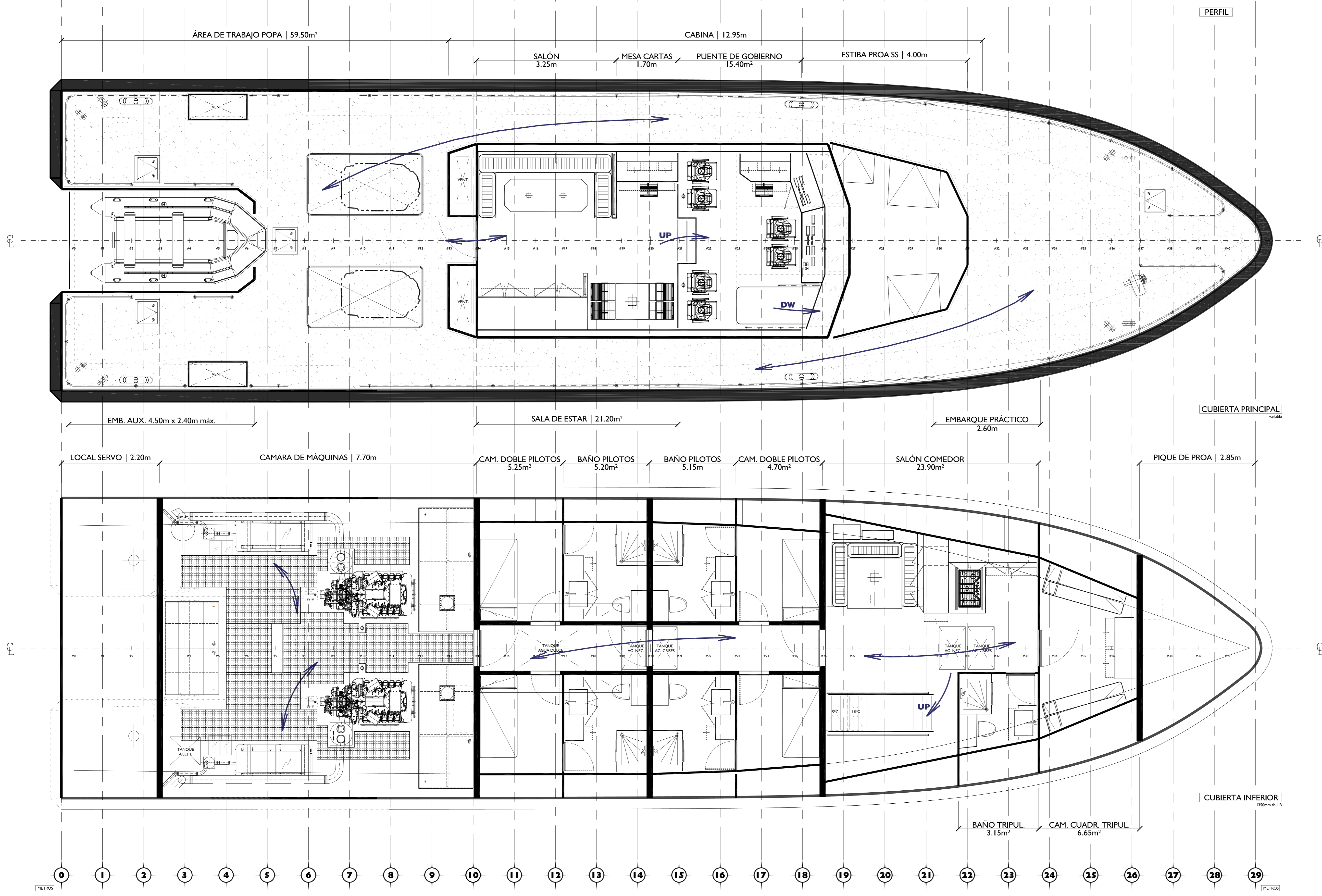
C2-089 PILOT BOAT 28m

NOTA LEGAL

- 1 | El presente documento / plano es propiedad de C2 | NAVAL ARCHITECTURE & MARINE ENGINEERING (en adelante, C2), su copia, uso para construcción y/o divulgación a terceras partes no está permitida sin autorización expresa.
- 2 | El Astillero deberá verificar el contenido del mismo y notificará a C2 en caso de duda y/o posible discrepancia antes de su construcción.
- 3 | Cualquier modificación sin autorización expresa por parte de C2, será bajo responsabilidad del Astillero.
- 4 | Los pagos por el uso del presente documento / plano y toda la información perteneciente a este Proyecto, es considerada por "Licencia de Uso" para una unidad, salvo documento expreso.
- 5 | Ninguna construcción adicional deberá iniciarse sin los pagos correspondientes y sin consentimiento por parte de C2.

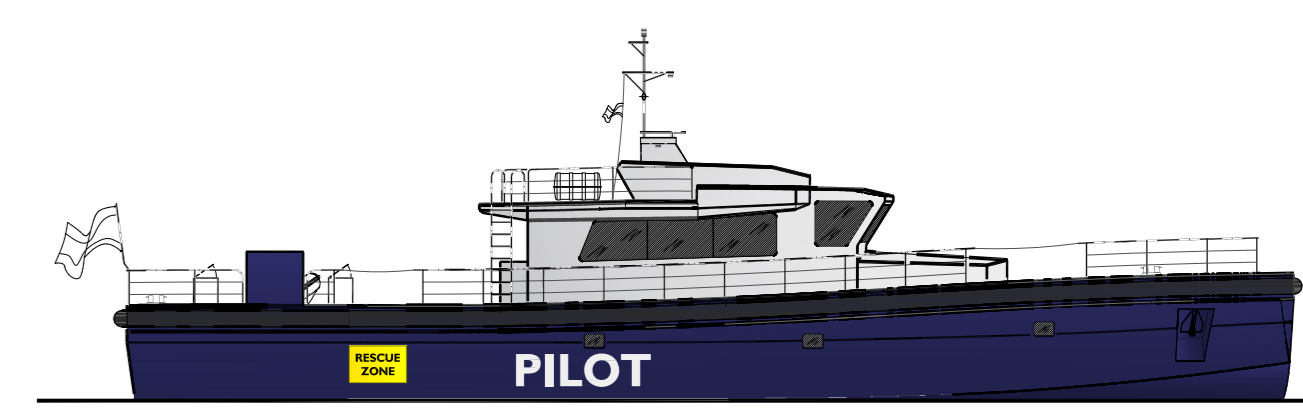
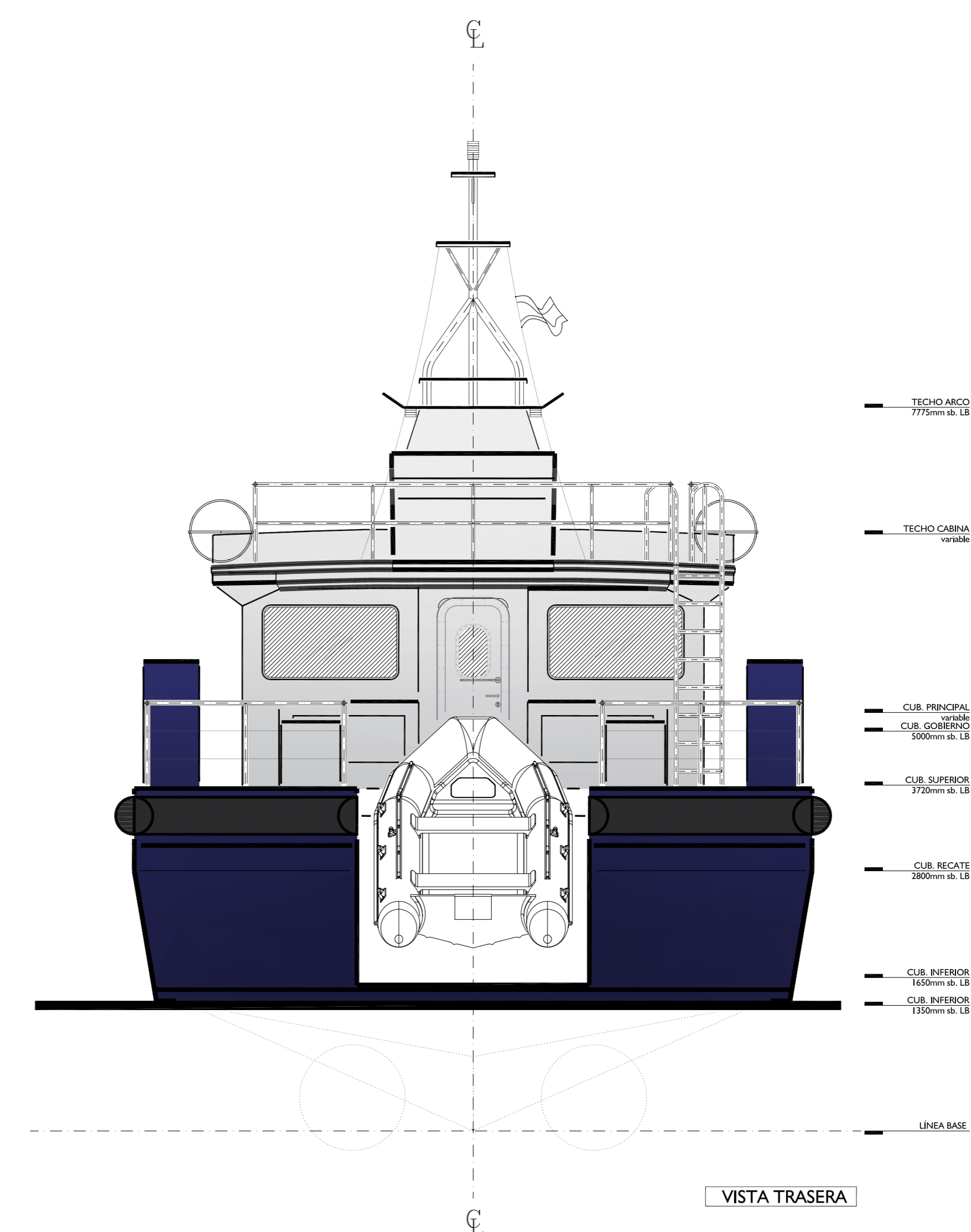


- TEOCHO ANCO 775mm de LB
- TEOCHO CABINA 700mm
- CUB. PRINCIPAL 1000mm de LB
- CUB. GOBIERNO 1000mm de LB
- CUB. SUPERIOR 1000mm de LB
- CUB. INTERIORES 1000mm de LB
- CUB. INTERIORES 1000mm de LB
- LINEA BASE



CARACTERÍSTICAS PRINCIPALES

Eslera total	29.10m
Eslera de flotación	28.60m
Manga de trazado	7.25m
Manga de flotación	6.85m
Puntal	3.85m
Altura total	8.10m
Calado de diseño	1.50m
Calado de escarillonado	1.80m
Desplazamiento (Td)	105200kg
Potencia máxima	2x 746kW
Pilotos	8 pax
Tripulación	4 pax
Velocidad máx.	18kn
Velocidad de crucero	12kn @ 80% MCR
Combustible	20400L
Aguas grises y negras	tbd
Agua dulce	7500L



Rev.	Date	Made by	Date	Approved by	Description
10	20240420	MCC	20240420	MCC	Plano actualizado Características principales actualizadas
09	20230421	MCC	20230421	MCC	Plano actualizado
08	20221206	MCC	20221206	MCC	Nueva disposición superestructura por solicitud del Astillero
07	20221121	MCC	20221121	MCC	Vista frente y trasera Cubierta inferior doble altura
06	20221104	CRA	20221104	MCC	Actualización formas casco
05	20221026	CRA	20221026	MCC	Información embarcación auxiliar
04	20221026	CRA	20221026	MCC	Modificaciones superestructura según indicaciones del Astillero Pasarela proa
03	20221025	CRA	20221025	MCC	Modificaciones superestructura según indicaciones del Astillero
02	20221022	CRA	20221022	MCC	Alargamiento embarcación Aumento volumen CCMH Modificación proa
01	20221014	CRA	20221014	MCC	Modificaciones según indicaciones del Astillero

Project | **089 PILOT BOAT 28m**

Reference | **020 GENERAL ARRANGEMENT**

Scale | 1:45 | Format | A0 | Page | 1 | N. of Pages | 1

Made by | MCC | Date | 20221004 | Revised by | ARA | Date | 20221004

C2 NAVAL ARCHITECTURE & MARINE ENGINEERING
www.C2-na.com | info@C2-na.com | +34-912-877-790

This drawing is the property of C2 | NAVAL ARCHITECTURE & MARINE ENGINEERING (hereinafter, C2). It should not be reproduced or reproduced for any construction or shared with third parties without a written authorization. Builder should check the content of this drawing and advise the C2 in case of any discrepancy prior of any construction. All modifications done by Builders without specific written authorization are carried out under their exclusive responsibility.

Este plano es propiedad de C2 | NAVAL ARCHITECTURE & MARINE ENGINEERING (en adelante, C2). Su contenido no debe ser reproducido, adaptado a una nueva construcción ni compartido con terceras partes sin autorización escrita. El Constructor deberá comprobar el contenido del presente documento y avisar a C2 en caso de discrepancia. Toda modificación realizada por el Constructor sin autorización expresa, será considerada bajo su responsabilidad.