

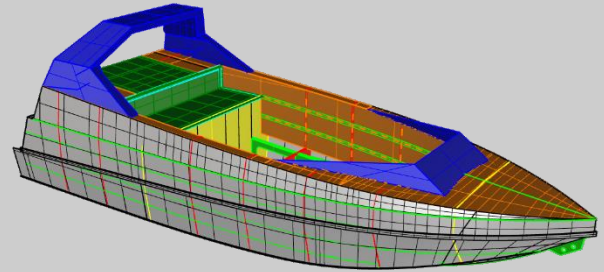
MAIN PARTICULARS

- Length overall:	6.28m
- Beam:	2.28m
- Height:	1.30m
- Design draught:	0.35m
- Scantling draught:	0.40m
- Displacement:	1850kg
- Max. power:	1x 300hp
- Max. speed:	+35kn
- Design Category:	Zona 3 Cat. C
- Passengers:	12pax
- Fuel tank:	1x 160l



NAVAL ARCHITECTURE
MARINE ENGINEERING

c/ Averroes 4, 28224 Pozuelo de Alarcón | Spain
T: (+34) 912-877-790 | M: (+34) 655-638-630
W: www.c2-na.com | E: info@c2-na.com



C2 | 059 – JET BOAT MODIFICACIÓN

The JET BOATA is a very fun boat, designed expressly for drifting on the sea.

Equipped with a water jet propulsion allows high performance and sharp turns with the boat in full load condition.

The boat is designed and built in H111 aluminum to withstand the loads of wave impacts at high speed.

This particular boat has 12 individual seats and protection bars to prevent injuries to passengers during the drifts. The skipper seat is positioned completely forward on the starboard side to guarantee a correct view of the navigation.

The fuel capacity is minimized as much as possible to increase the capacity of people on board. The boat is equipped by one fuel tank of 160 liters capacity which offers a range of above 4h at full speed regime.

The boat has a STEYR 306 J38-292HP central engine at 3800rpm in combination with a HAMILTON 213 jet, which allows speeds greater than 35kn.

The boat's structure is designed to withstand the loads originated from "full ahead" to "full astern", also complying with the strictest applicable regulations.

The bilge system is equipped with several automatic pumps in order to guarantee a rapid evacuation of the water embarked during navigation.

The resulting vessel can be high customized and the construction design allows a very short construction time.

