

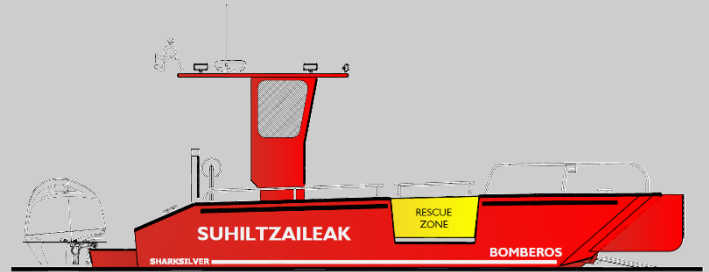
MAIN PARTICULARS

- Length overall: 6.60m
- Length between perpendiculars: 4.98m
- Beam: 2.47m
- Height: 1.31m
- Design draught: 0.36m
- Scantling draught: 0.40m
- Max. power: 1x 200hp
- Max. speed: +30kn
- Cruise speed: 23kn @ 80% MCR
- Design Category: Zona 3 | Cat. C
- Passengers: 12pax
- Fuel tanks: 1x 205l



NAVAL ARCHITECTURE
MARINE ENGINEERING

c/ Averroes 4, 28224 Pozuelo de Alarcón | Spain
T: (+34) 912-877-790 | M: (+34) 655-638-630
W: www.c2-na.com | E: info@c2-na.com



C2 | 055 – LANDING CRAFT 600 BOMBEROS BILBAO

The LANDING CRAFT 600 BOMBEROS BILBAO boat is a workboat made of aluminum to meet the requirements for which she has been designed.

It is a boat of reduced length and with a maximized beam permitted to be transported by trailer.

It has a large and open deck to accommodate 12 passengers through folding side benches.

The boat has side guillotine doors located at both sides with low freeboard to facilitate rescuing purposes.

The open cabin has capacity for two people and is located on the starboard side to facilitate the vision field during the navigation. At the bow the cabin, there is a small integrated seat with capacity for two people and stowage inside.

Aft of the cabin and centered at centerline there is a towing mast with a pulling capacity of more than 500kg.

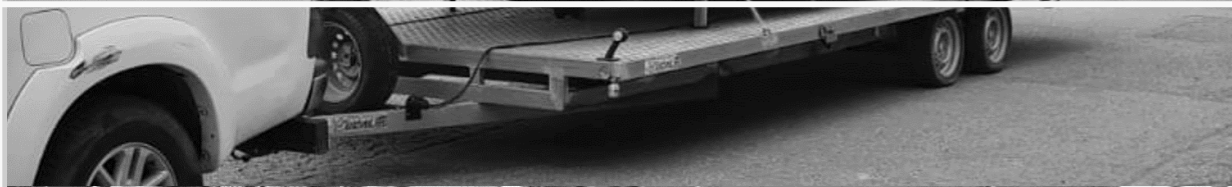
The bow area has a folding door with hydraulic operation through two pistons located on each side.

On each side of the folding door there are two pushers made of aluminum which it is possible to push straight if the situation requires it.

The boat has a fuel tank with a capacity of more than 200 liters, which gives to the boat a great range.

The maximum installable power is 200hp, which the boat can achieve maximum speeds over 30kn depending on the load condition and cruising speeds of around 23kn.

The built unit has installed an outboard engine of 150hp offering a top speed of 26kn with three people onboard and calm seas.

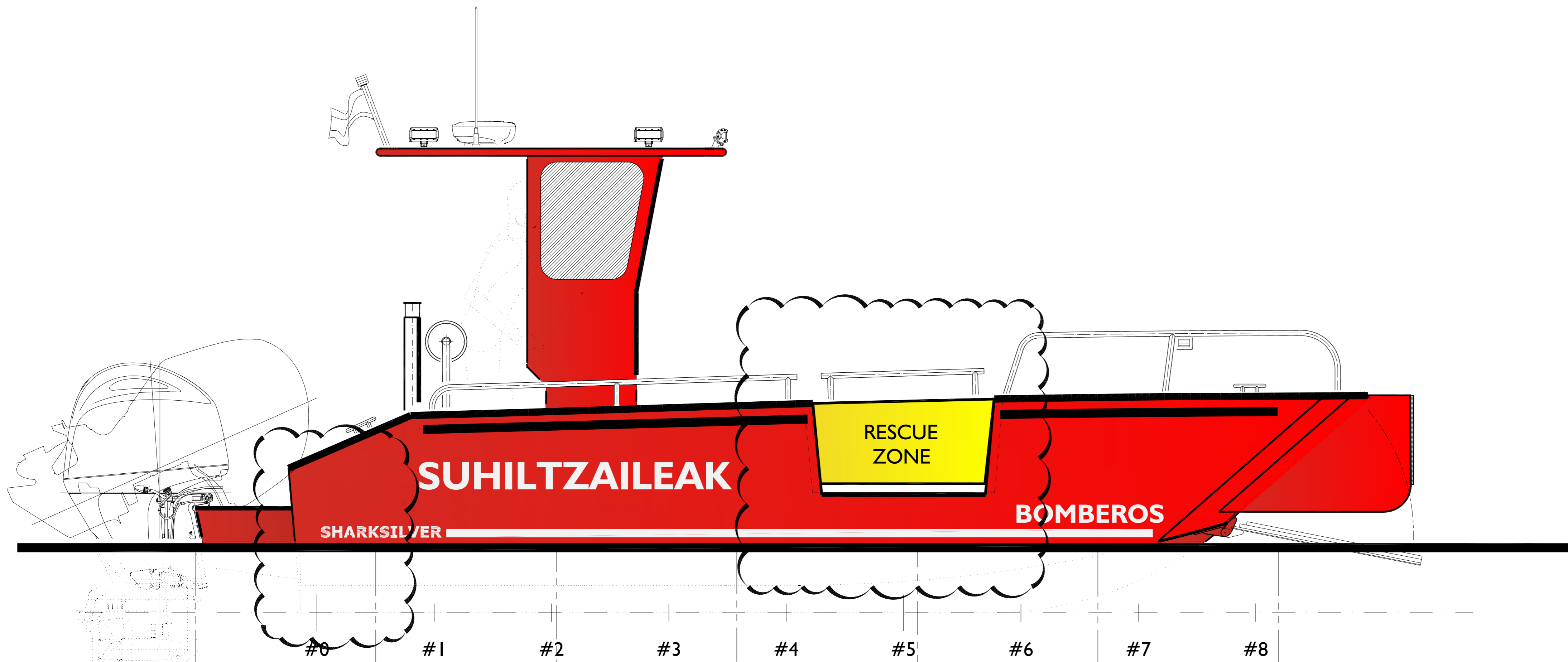


NOTA LEGAL

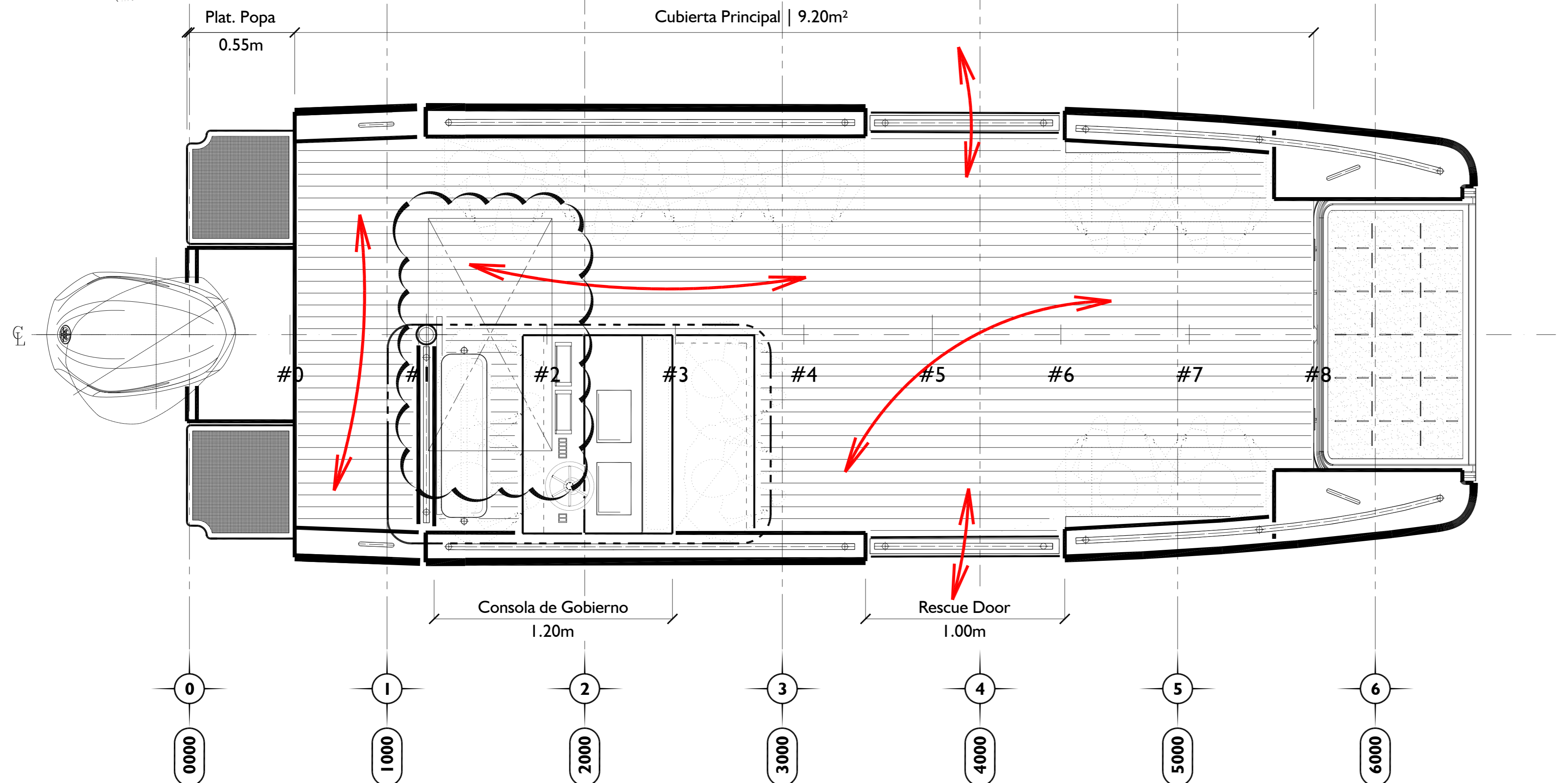
- 1 | Este plano / documento es propiedad de C2 | NAVAL ARCHITECTURE & MARINE ENGINEERING (en adelante, C2), su copia, construcción y/o uso por terceras partes no está permitido sin autorización escrita.
- 2 | El Astillero deberá verificar el contenido del mismo y notificará a C2 en caso de duda y/o posible incongruencia antes de proceder a su construcción.
- 3 | Toda modificación del contenido, sin el consentimiento firmado por C2, será llevado a cabo bajo responsabilidad del Astillero.

CARACTERÍSTICAS PRINCIPALES

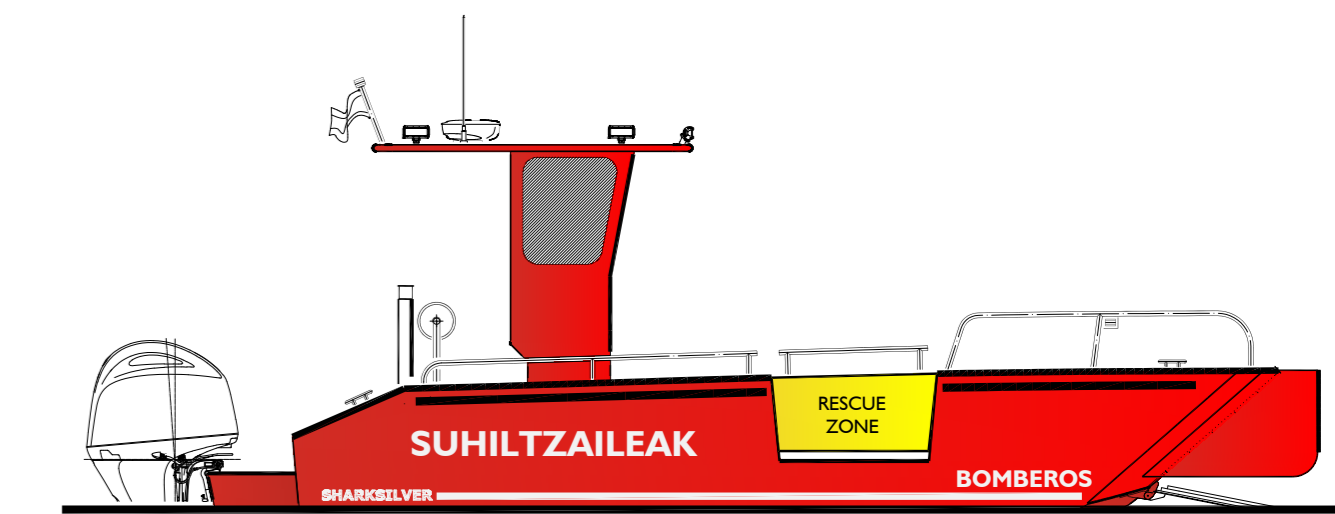
Eslora Total	6.60m
Eslora Entre Perpendiculares	4.98m
Manga	2.47m
Puntal	1.31m
Calado de Diseño	0.36 m
Calado de Escantillonado	0.40 m
Categoría de Diseño (CE)	Zone 3 Cat. C
Potencia Máxima	1x 150hp
Velocidad Máxima	26kn
Velocidad de Crucero	21kn @ 80% MCR
Pasajeros	12x



VISTA LATERAL



CUBIERTA PPAL.
560mm sb. LB



03	20211118	MCC	20211118	MCC	Modificaciones puerta lateral, aumento altura estampa y forro en zonas de puertas de rescate. Desplazamiento tanque de combustible.
02	20211009	MCC	20211009	MCC	Actualización comentarios Astillero
01	20211008	MCC	20211008	MCC	Actualización comentarios Astillero
Rev.	Date	Made by	Date	Approved by	Description
Project		055 LANDING CRAFT 600 BOMBEROS BILBAO			
Reference		020 GENERAL ARRANGEMENT			
Scale	1:15	Format	A1	Page	N. of Pages
Made by	MCC	Date	20200412	Revised by	MCC Date 20200412

C2 | **NAVAL ARCHITECTURE
MARINE ENGINEERING**
www.C2-na.com | info@C2-na.com | +34-912-877-790

| This drawing is the property of C2 | NAVAL ARCHITECTURE & MARINE ENGINEERING (hereinafter, C2). It should not be reproduced or reproduced for any construction or shared with third Parties without a written authorisation. Builder should check the content of this drawing and advise the C2 in case of any discrepancies prior of any construction. All modifications done by Builders without specific written authorisation are carried out under their exclusive responsibility.
| Este plano es propiedad de C2 | NAVAL ARCHITECTURE & MARINE ENGINEERING (en adelante, C2). Su contenido no debe ser reproducido, adaptado a una nueva construcción ni compartido con terceras Partes sin autorización escrita. El Constructor deberá comprobar el contenido del presente documento y avisar a C2 en caso de discrepancia. Toda modificación realizada por el Constructor sin autorización expresa, será considerado bajo su responsabilidad.